



## RESEARCH ARTICLE

10.1029/2022JG006817

# High Inter- and Intra-Lake Variation in Sediment Phosphorus Pools in Shallow Lakes

Ellen A. Albright<sup>1,2</sup> , Fleck King Rachel<sup>1</sup>, Quin K. Shingai<sup>1,3</sup>, and Grace M. Wilkinson<sup>1,2</sup>

<sup>1</sup>Department of Ecology, Evolution and Organismal Biology, Iowa State University, Ames, IA, USA, <sup>2</sup>Now at Center for Limnology, University of Wisconsin-Madison, Madison, WI, USA, <sup>3</sup>Now at Department of Biological Sciences, Dartmouth College, Hanover, NH, USA

### Key Points:

- The size and chemical composition of sediment phosphorus pools are spatially heterogeneous both within and among shallow lakes
- Lake basin morphology, water depth, and watershed characteristics drive variation in sediment P pools within and among lakes
- Understanding intra-lake variation in sediment P informs the spatial sampling resolutions necessary for accurate P stock assessments

### Supporting Information:

Supporting Information may be found in the online version of this article.

### Correspondence to:

E. A. Albright,  
[ecalbright2@wisc.edu](mailto:ecalbright2@wisc.edu)

### Citation:

Albright, E. A., Fleck King, R., Shingai, Q. K., & Wilkinson, G. M. (2022). High inter- and intra-lake variation in sediment phosphorus pools in shallow lakes. *Journal of Geophysical Research: Biogeosciences*, 127, e2022JG006817. <https://doi.org/10.1029/2022JG006817>

Received 22 JAN 2022

Accepted 2 JUN 2022

**Abstract** Phosphorus (P) release from lakebed sediments may fuel phytoplankton blooms, especially in shallow waterbodies. A primary mechanism that controls internal P loading is the size and chemical composition of the sediment P pool. However, variation in sediment P within and among shallow lakes remains poorly quantified. We measured the degree of spatial heterogeneity in the size and composition of sediment P pools, both within and among seven shallow lakes. There was a 1.6× difference in total sediment P among the study lakes, and P composition varied across lakes based on differences in watershed soils and land cover and lake basin morphology. Differences in sediment P composition among lakes imply that the dominant mechanisms of internal loading will also vary among lakes. We also found that higher mobile P (as a fraction of total P) in the profundal sediments was positively correlated with long-term mean chlorophyll-*a* concentrations ( $p = 0.04$ ), indicating the reciprocal relationship between sediment P composition and phytoplankton biomass in shallow lakes. Additionally, we measured substantial within-lake heterogeneity in total and loosely-bound sediment P within each lake. Concentrations were positively correlated with water depth such that extrapolating measurements from the deep site alone could overestimate whole-lake mean P concentrations, reinforcing that single station methods produce unreliable estimates of mean sediment P stocks. Our results provide insight into the magnitude and pattern of inter- and intra-lake variation in sediment P pools that should be accounted for when sampling, scaling measurements, and modeling sediment P dynamics.

**Plain Language Summary** Phosphorus (P) is an essential nutrient in freshwater ecosystems; however, in excess it can cause blooms of algae and cyanobacteria. P enters lakes from the watershed (external loading) or when released from lakebed sediments into the overlying water (internal loading). Sediment P chemistry controls internal loading because some forms of P are more susceptible to release. However, we lack a quantitative understanding of how sediment P chemistry can vary within individual lakes and among different waterbodies. We measured variation in sediment P composition within and among seven shallow lakes. We found that sediment P composition varied across lakes based on lake and watershed characteristics. We also found that a higher abundance of mobile P forms in the sediments was correlated with higher concentrations of phytoplankton pigments, indicating that sediment P composition may influence phytoplankton biomass in shallow lakes. Within individual study lakes, sediment P was highly variable, meaning that multiple samples are required to capture this heterogeneity. Our results reveal the scale of spatial variation in sediment P forms in shallow lakes. Since sediment P composition is a primary mechanism controlling sediment P release, this knowledge is critical to building accurate models to predict internal P loading.

## 1. Introduction

Sediments are an integral component of aquatic ecosystems, especially shallow lakes. The sediments regulate whole-lake biogeochemical cycles through diagenetic processes and material exchange across the sediment-water interface (Forsberg, 1989; Golterman, 2004). For example, phosphorus (P) stored in sediments may reenter the water column due to disturbance, microbial activity, or changes in chemical conditions at the sediment surface (Boström et al., 1988; Søndergaard et al., 2003). In many ecosystems, this sediment P release (i.e., internal P loading) can maintain high water column P concentrations, even if external nutrient inputs are reduced (Jeppesen et al., 2005; Søndergaard et al., 1999, 2013). Excess P availability supports phytoplankton production (Elser et al., 2007; Schindler et al., 2016), which can reach nuisance levels, threatening ecosystem services and public health (Schindler & Vallentyne, 2008). The morphometric features of shallow lakes make these systems particularly susceptible to internal P loading. Specifically, shallow basins have a large sediment surface area relative to

© 2022 The Authors.

This is an open access article under the terms of the [Creative Commons Attribution-NonCommercial License](https://creativecommons.org/licenses/by-nc/4.0/), which permits use, distribution and reproduction in any medium, provided the original work is properly cited and is not used for commercial purposes.

water volume. As a result, sediment-water interactions are highly influential in determining whole-lake water chemistry (Søndergaard et al., 2003; Welch & Cooke, 1995). Although it is known that internal P loading is an important process in shallow lakes, variation in the underlying mechanisms remains poorly quantified for these ecosystems.

The chemical composition of the sediment P pool is an important mechanism controlling internal loading because some forms of P are more mobile than others. Sediment P may be found in a wide variety of minerals and organic materials as well as sorbed to particle surfaces (North et al., 2015). This chemical speciation determines the conditions in which P is mobilized and released as different P forms are vulnerable to different internal loading processes (Orihel et al., 2017). For example, changes in redox potential due to fluctuations in dissolved oxygen and alternative electron acceptor concentrations can mobilize P associated with redox-sensitive minerals (i.e., iron- and manganese-bound P; Mortimer, 1941; Orihel et al., 2015). Changes in pH may release other mineral-bound P forms (e.g., calcium-, and aluminum-bound; Jensen & Andersen, 1992), and microbial decomposition can liberate P incorporated in labile organic materials (Frost et al., 2019; Joshi et al., 2015; Song & Burgin, 2017). Sediment resuspension due to wind disturbance or bioturbation releases pore water and surface-sorbed P (i.e., loosely-bound P *sensu* James, 2017b; Ekholm et al., 1997). Loosely-bound P is likely an important form of sediment P in shallow lakes as these ecosystems experience frequent water column mixing and wind disturbance (Bengtsson & Hellström, 1992). Although internal P loading occurs under a variety of conditions, the dominant mechanisms are determined by the chemical composition of the sediment P pool.

Sediment P content and chemical composition vary among lakes due to differences in watershed features and external loading as well as autochthonous processing. External P loading includes particulate and dissolved forms that are transported from the watershed into lakes through surface and subsurface flows (Carpenter et al., 1998; Pease et al., 2018). The P speciation in catchment soils will drive the chemical composition of particulate P inputs, in turn influencing the composition of the sediment P pool (Kerr et al., 2011; Tang et al., 2019). However, selective soil erosion and transport processes may alter sediment composition relative to the soil matrix if various P fractions are not distributed evenly across grain sizes. Fine particles that are more easily transported are often enriched in exchangeable, organic, and iron- and aluminum-bound P and depleted in calcium-bound P relative to larger grain sizes (Stone & English, 1993). As a result, lakebed sediments may have more labile P forms than the surrounding soils (Kerr et al., 2011). In addition to exogenous loading of particulate forms, P may also enter waterbodies in an aqueous form or desorb from settling particles before reaching the sediments (Pease et al., 2018). This soluble P is readily taken up by aquatic primary producers. Following biological uptake, P may be cycled among producers and consumers or it may settle out of the water column as necromass, phytoplankton detritus, or macrophyte leaf litter (Orihel et al., 2017). The sources of sedimented organic matter influence sediment P composition and lability (Twilley et al., 1986). For example, if phytoplankton detritus dominates organic matter sedimentation, then sediment organic P will be associated with more labile materials (Jiang et al., 2022). Inter-lake variation in sediment P composition, due to differences in exogenous inputs and in situ processing, may also cause the dominant mechanisms of internal P loading to vary among different waterbodies.

In addition to variation among different lakes, the spatial distribution of the sediment P pool is also heterogeneous within individual lakes following variation in sediment transport, deposition, and resuspension processes (Mackay et al., 2012). Sediment total P generally increases with water depth as a result of sediment focusing, which concentrates fine-grained, P-enriched sediments in deeper portions of the lake basin (Cardoso-Silva et al., 2018; Hou et al., 2014; White & Stone, 1996). Dynamic disturbance and biological activity across the lakebed further drive spatial variation in sediment P speciation (Kowalczywska-Madura, Goldyn, et al., 2019; Nowlin et al., 2005; Trolle et al., 2009). Variable sediment disturbance has the greatest influence on the distribution of loosely-bound P forms. Smaller stocks of loosely-bound P are expected in shallow sediments that experience wind or wave disturbance while higher loosely-bound P content is expected in deeper, more protected sediments (James, 2017a). Additionally, the location and density of macrophyte beds can influence the spatial distribution of sediment P as macrophytes take up pore water P to meet their nutrient requirements (Xing et al., 2018) but also protect stocks of loosely-bound P by reducing resuspension (Madsen et al., 2001). Sediment focusing and disturbance as well as the presence of macrophytes are expected in shallow waterbodies (Kelton & Chow-Fraser, 2005). As a result, the spatial distribution of sediment P content and composition are expected to be heterogeneous within shallow lakes (Mackay et al., 2012; Orihel et al., 2017). However, research on spatial

**Table 1**  
*Location, Basin Morphology, and Watershed Features of the Study Lakes (Iowa, 2018)*

|  | Center Lake  | Five Island  | Silver Lake  | Storm Lake | North Twin   | South Twin   | Swan Lake |
|--|--------------|--------------|--------------|------------|--------------|--------------|-----------|
| Latitude                                       | 43.41263     | 43.1545      | 43.44145     | 42.61977   | 42.47563     | 42.45847     | 42.03568  |
| Longitude                                      | −95.1357     | −94.648      | −95.3353     | −95.1857   | −94.6405     | −94.6536     | −94.8416  |
| Surface area (ha)                              | 104          | 405.6        | 431.4        | 1270.7     | 187.4        | 224.6        | 48.6      |
| Maximum depth (m)                              | 5.5          | 8            | 3            | 6.2        | 3.7          | 1.6          | 3.8       |
| Mean depth (m)                                 | 3.7          | 1.7          | 2            | 2.6        | 2.7          | 1.1          | 1.7       |
| Catchment/surface area                         | 2.7          | 9.2          | 10.7         | 4.4        | 4.6          | 6            | 6.1       |
| Chlorophyll- <i>a</i> ( $\mu\text{g L}^{-1}$ ) | 37.58        | 47.08        | 30.62        | 16.65      | 53.89        | 85.22        | 77.94     |
| % Cropland                                     | 14.3         | 75.5         | 78.1         | 60.2       | 82.5         | 78.4         | 45.1      |
| Dominant soil origin                           | Glacial till | Glacial till | Glacial till | Loess      | Glacial till | Glacial till | Loess     |
| Mean TN:TP (molar)                             | 56.2         | 116.6        | 118.7        | 50.9       | 77.5         | 51.5         | 20.5      |

*Note.* Chlorophyll-*a* concentrations and TN:TP molar ratios are the 19-year mean (2000–2018) of measurements made during the ice-free season ( $n = 36$ –49 measurements per lake) with the exception of South Twin Lake which is the 13-year mean (2006–2018) of measurements made during the ice-free season ( $n = 35$ ). TN:TP, total nitrogen to total P.

variation in sediment P pools has focused on large or deep waterbodies, and the degree of spatial heterogeneity in sediment P content and composition in smaller, polymictic lakes remains poorly quantified.

In order to quantify the spatial heterogeneity of sediment P species in shallow lakes, we measured the sediment P pools of seven shallow, glacial lakes in northwest Iowa, USA. Specifically, we collected sediment cores from 10 locations within each lake and analyzed the sediments for total P as well as pore water and loosely-bound P. We quantified spatial variation in these P forms and tested how sampling resolution influenced estimates of mean sediment P concentrations. Water depth is expected to drive horizontal variation in sediment P within lakes, with higher concentrations found in deeper areas. We further hypothesize that lakes with more variable bathymetry, as quantified by volume development, will have greater variability in loosely-bound P, driven by variation in sediment disturbance and macrophyte occurrence. The sediment core from the deepest site in each study lake was additionally analyzed for total P and five sediment P species (loosely-bound P, redox-sensitive, labile organic, and calcium-, and aluminum-bound fractions). We hypothesize that variation in the composition of the sediment P pool among lakes will relate to watershed soil composition, land cover, and long-term phytoplankton biomass. Accurate inventories of sediment P stocks as well as estimates of P burial rates and internal loading potential must account for spatial variation in sediment P content and composition. By quantifying spatial heterogeneity in sediment P within shallow lakes, our analysis suggests appropriate spatial resolutions for sampling sediment P pools; constrains the uncertainty associated with scaling single measurements of P across the lakebed; and informs models of lentic P cycling, such as those used for regulatory planning (e.g., total maximum daily load calculations for P-impaired waterbodies). Our analysis of variation in sediment P pools among different waterbodies illuminates how the mechanisms of internal P loading may also vary among lakes and is a critical step to being able to predict internal P loading potential based on lake and watershed characteristics.

## 2. Materials and Methods

### 2.1. Study Lakes

We surveyed seven shallow, glacial lakes in northwest Iowa, USA (Table 1). The spatial extent of the study lakes covers approximately 5,600 km<sup>2</sup> on the western edge of the Des Moines Lobe. Although the study systems cover a wide range of basin characteristics, all are shallow (average mean depth = 2.2 m) and follow a discontinuous cold polymictic stratification and mixing pattern (Lewis, 1983; Table S1 in Supporting Information S1). These lakes were formed from kettle depressions at the end of the Wisconsin glaciation. The watershed soils developed from loamy glacial till and are now heavily influenced by row crop agriculture (Arbuckle & Downing, 2001; Tables S2 and S3 in Supporting Information S1). The watersheds of Storm and Swan Lake also contain soils developed from loess deposits as these catchments are located on the boundary of the Des Moines Lobe and the

Loess Prairies of western Iowa. All of the study lakes are classified as eutrophic or hypereutrophic due to high phosphorus concentrations (Carlson, 1977), but are characterized as P-limited based on long-term total nitrogen to total P (TN:TP) molar ratios (Table 1; Figure S1 in Supporting Information S1; Arbuttle & Downing, 2001).

## 2.2. Sediment Core Collection

We collected 10 sediment cores from each study lake once between mid-June and early July of 2018 using a gravity corer (inner diameter 5 cm). Sampling sites included the deep point of the lake (hereafter “profundal sediments”), from which all sediment P species and total P were measured, as well as nine shallower sites distributed across the lakebed, from which only loosely-bound (i.e.,  $\text{NH}_4\text{Cl}$ -extractable, including pore water and surface-sorbed P) and total P were measured. These additional sites were selected using a randomized sampling scheme stratified by water depth. Specifically, sites were randomly selected from an evenly spaced grid of potential sites within each depth contour, defined as 0.5 or 1 m intervals depending on the maximum depth of the lake. All sediment cores were sliced in the field immediately following collection. Cores from the profundal site, the zone of sediment accumulation, were sliced every 2 cm up to 10 cm deep and then every 5 cm up to 20 cm deep. One slice from 0 to 10 cm was collected for each of the other nine shallow sediment cores. Sediment samples were sealed in plastic bags with the air removed and transported and stored at 4°C until analysis. All analyses began within 36 hr of sample collection.

## 2.3. Sediment Physical and Chemical Analyses

Sediments from each sampling site were thoroughly homogenized within their own sample bags before subsampling for physical and chemical analyses. For analysis of physical characteristics, a 0.4–0.5 g subsample was measured into a pre-weighed, oven-dried aluminum weigh boat. The subsamples were then placed in a drying oven at  $104 \pm 1^\circ\text{C}$  for at least 2 hr to dry to a constant mass. The wet and dry masses of each subsample were used to calculate sediment moisture content (MC; Text S1 and Equation 1 in Supporting Information S1). The samples were then combusted in a muffle furnace for 2 hr at  $550^\circ\text{C}$  and weighed again to calculate organic matter content as loss-on-ignition (Text S1 and Equation 2 in Supporting Information S1) and estimate bulk density (Text S1 and Equation 3 in Supporting Information S1; Håkanson & Jansson, 2002).

An additional sediment subsample was analyzed for P speciation via sequential extraction following the methods of James (2017b). This method was modified from the methods of Nürnberg (1988) and Psenner and Puckso (1988). To begin the sequential P extractions, subsamples of fresh sediment equivalent to 0.2 g of dry sediment (Text S1 and Equation 4 in Supporting Information S1) were weighed into 50 mL polyethylene centrifuge tubes. The same sediment pellet was used throughout the sequential extraction procedure. All extractions were performed at  $25^\circ\text{C}$  unless otherwise stated. Centrifuge time and speed (30 min at 3,000 rpm) as well as shaker table speed (120 rpm) were consistent across extractions.

### 2.3.1. Loosely-Bound P

To quantify loosely-bound P (all sampling sites in each lake), sediment was extracted in 25 mL of 1 M  $\text{NH}_4\text{Cl}$ . The samples were placed on a shaker table for 2 hours and then centrifuged. After pouring off and saving the supernatant, we repeated this extraction on the same sediment pellet. The combined, filtered (0.45  $\mu\text{m}$  GF/C filters) supernatants were analyzed for soluble reactive phosphorus (SRP; Standard Methods 4500-P E, 1998b) to determine the concentration of sediment pore water and loosely-bound P (Text S1 and Equation 5 in Supporting Information S1).

### 2.3.2. Additional P Species

For profundal sediment samples, additional extraction steps were performed on each core slice immediately following the  $\text{NH}_4\text{Cl}$  extraction to quantify other P species. Redox-sensitive P species were extracted in 12.5 mL of a 0.11 M bicarbonate–0.1 M sodium dithionate solution. Sample tubes were placed in a  $40^\circ\text{C}$  water bath for 30 min and centrifuged. The supernatant was bubbled with air for at least 30 min before filtering and analyzing for SRP. Next, we determined the amount of labile organic P and P associated with aluminum oxides with a two-step 0.1 M NaOH extraction. We added 25 mL of the extractant to the sample tubes and shook the samples for 17 hr. After centrifuging, the supernatant pH was adjusted to between 6 and 8 using 0.1 M HCl. A subsample of the supernatant was filtered and analyzed for SRP to determine the aluminum-bound P concentration

while the remainder underwent a persulfate digestion (Standard Methods 4500-P B.5, 1998a) before SRP analysis to determine the concentration of both aluminum-bound and labile organic P. The labile organic P fraction was determined as the difference between the total NaOH-extractable P and the subsample analyzed for aluminum-bound P. Unfortunately, the persulfate digestion for total NaOH-extractable P failed for sediments from three of the lakes (Swan, North Twin, and South Twin) due to an autoclave malfunction. As such, we were unable to determine labile organic P for these lakes. Since the error occurred during supernatant processing, we are confident that the sequential extractions for other P fractions were not affected. For the final extraction for calcium-bound P, we added 25 mL of 0.5 M HCl to the remaining sediment pellet, shook for 24 hr, and centrifuged. We then used 0.1 M NaOH to adjust the supernatant pH to within 6–8 before SRP analysis. All SRP concentrations were corrected for pH adjustments and standardized by extractant volume and sediment mass to determine the sediment concentration of each P species (Text S1 and Equations 5–9 in Supporting Information S1).

### 2.3.3. Sediment Total P

To determine the total P concentration, we performed a hot acid digestion on an additional subsample from every sediment sample (both profundal and shallow sites). Sediments were dried for 24 hr, ground into a fine powder with a mortar and pestle, and stored in glass scintillation vials until analysis. For the acid digestion, we first weighed 0.2 g of the dried, ground sediment and combusted it at 550°C for 2 hr. We then boiled the sediment samples on a digestion block in 50 mL of 1 M HCl for 2 hr at 150°C. Following digestion, we brought the samples back up to volume using 50 mL of deionized water. Samples were then pH adjusted within 6–8 using 0.1 M NaOH before analysis of TP (Standard Methods 4500-P B.5, E, 1998a). All concentrations were corrected for pH adjustments and dilution and standardized by the sediment mass used (Text S1 and Equation 10 in Supporting Information S1).

## 2.4. Long-Term Chlorophyll-*a* Data

In order to explore the relationship between sediment P composition and phytoplankton biomass, we used chlorophyll-*a* concentrations as an index of phytoplankton biomass. Chlorophyll-*a* data were obtained from the Iowa Department of Natural Resources AQUIA public data repository. Chlorophyll-*a* concentrations are determined based on the U.S. Environmental Protection Agency (EPA) method 445 from a depth integrated sample up to the thermocline or 2 m deep, whichever is shallower (Arar & Collins, 1997; Standard Methods 10200-H, 1998c). These measurements are made 3–5 times each summer from May through September as a part of the Iowa Department of Natural Resources Ambient Lake and Shallow Lakes monitoring programs. Water samples for these analyses were collected from a single station at the deepest site of each study lake. Annual monitoring began in 2000 in all lakes except South Twin where monitoring began in 2006. Data from the first year of monitoring through the summer of 2018 when sediment samples were collected were used to capture a long-term perspective of lake chlorophyll-*a* concentrations.

## 2.5. Aquatic Macrophyte Survey

We evaluated spatial relationships between macrophyte beds and sediment P pools in one of the study lakes, Swan Lake, as there were extensive beds of submersed and floating-leaf macrophytes in this waterbody. High turbidity limited macrophyte colonization in the other study lakes; therefore, we focused our investigation of macrophytes and sediment P pools to Swan Lake. We surveyed aquatic macrophyte community composition and bed density on Swan Lake in July of 2018 (peak of seasonal growth) using the point-intercept method (Text S2 in Supporting Information S1).

## 2.6. Statistical Analyses

To determine if profundal sediment P speciation varied among study lakes, we used compositional data analysis and principal components analysis (PCA) on the covariance matrix. Compositional data analysis tests for a difference of proportions among multivariate observations that convey relative information (i.e., parts of a whole). This statistical approach allowed us to test differences in the relative abundance of P fractions among the study lakes without biasing the analysis to the most abundant fractions (Filzmoser et al., 2018). We used

**Table 2**  
*Variation in Profundal Sediment P Among Lakes and Within-Lake Heterogeneity (Iowa, 2018)*

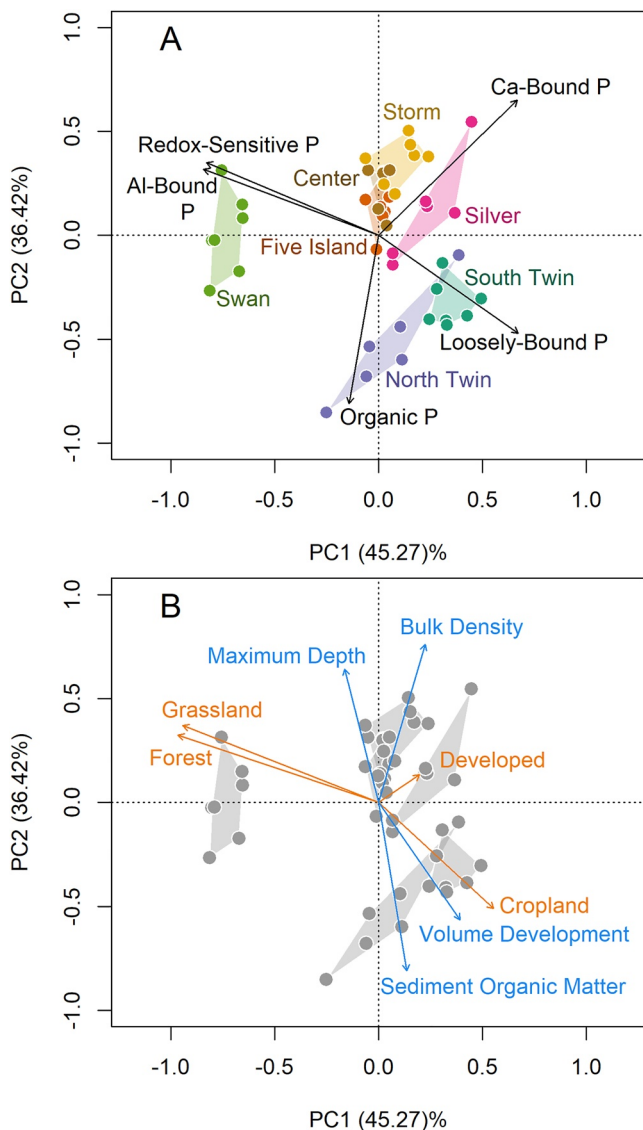
|  | Center Lake           | Five Island             | Silver Lake          | Storm Lake           | North Twin              | South Twin            | Swan Lake               |
|--|-----------------------|-------------------------|----------------------|----------------------|-------------------------|-----------------------|-------------------------|
| Total P ( $\mu\text{g P g}^{-1}$ dry sediment) | 938.3 ( $\pm 191.4$ ) | 1,013.5 ( $\pm 160.9$ ) | 936.5 ( $\pm 97.0$ ) | 738.2 ( $\pm 29.5$ ) | 1,134.1 ( $\pm 288.3$ ) | 939.1 ( $\pm 113.1$ ) | 1,164.7 ( $\pm 306.2$ ) |
| % Redox-sensitive                              | 24.45                 | 30.30                   | 22.81                | 31.16                | 9.62                    | 11.81                 | 35.58                   |
| % Labile organic                               | 31.45                 | 25.02                   | 21.79                | 19.06                | –                       | –                     | –                       |
| % Refractory organic                           | 21.85                 | 15.98                   | 17.53                | 22.35                | –                       | –                     | –                       |
| % Total organic                                | 53.31                 | 41.00                   | 39.32                | 41.41                | 74.81                   | 70.48                 | 50.14                   |
| % Loosely-bound                                | 7.75                  | 15.04                   | 21.79                | 9.88                 | 10.74                   | 12.09                 | 3.16                    |
| % Al-bound                                     | 7.02                  | 8.21                    | 7.50                 | 6.91                 | 2.79                    | 1.96                  | 9.72                    |
| % Ca-bound                                     | 7.47                  | 5.44                    | 8.58                 | 10.64                | 2.04                    | 3.64                  | 1.40                    |
| CV total P (%)                                 | 10.2                  | 19.0                    | 6.4                  | 17.5                 | 7.3                     | 22.4                  | 15.2                    |
| CV loosely-bound (%)                           | 17.5                  | 32.0                    | 17.7                 | 37.3                 | 24.4                    | 11.4                  | 39.7                    |

*Note.* Total P values are the mean ( $\pm$  standard deviation) for all intervals of the deep site core. The percent contribution of each P species to the total sediment P pool is an average value across the deep site core profile. The coefficient of variation for total and loosely-bound P was calculated for all 10 sediment cores collected across each study lake.

the concentrations of sediment P species measured at each depth interval in the core from the deep site of each study lake in this analysis. However, one interval slice from North Twin (0–2 cm) and two from Center Lake (2–4 cm and 10–15 cm) were excluded from the analysis due to insufficient preserved sediment to determine total P. The compositional analysis was defined by the concentrations of loosely-bound (porewater and surface sorbed), redox-sensitive (Fe- and Mn-bound), aluminum-bound, calcium-bound, and total organic P (defined as the sum of labile and refractory organic P). Refractory organic P was calculated as the difference between total P and the sum of loosely-bound, redox-sensitive, aluminum-bound, calcium-bound, and labile organic P. For the study lakes where we were unable to measure labile organic P directly, we calculated total organic P as the difference between total P and the sum of loosely-bound, redox-sensitive, aluminum-bound, and calcium-bound P (Table 2). The sediment P concentrations were center logratio transformed prior to PCA and further analyses. We fit vectors of environmental data to the PCA biplot to explore how watershed land cover, basin morphology, and sediment physical characteristics corresponded to patterns in profundal sediment P speciation among lakes.

In order to understand the relationship between sediment P bioavailability and phytoplankton biomass, we performed a linear regression of the mean proportion of the total sediment P pool found in a mobile form (the combination of the loosely-bound, total organic, and redox-sensitive species) in the surface sediments (0–6 cm) at the profundal site versus the long-term (13 or 19 years) mean chlorophyll-*a* concentration, as an index of phytoplankton biomass, in the mixed surface layer of each lake. Sediment P and chlorophyll-*a* concentrations are spatially congruent as both were measured at the deep site of each lake. Additionally, these values represent a similar timescale. The surface sediments (0–6 cm) at the profundal sampling sites represent roughly 45 years of sediment accumulation (Heathcote et al., 2013). As such, we chose to compare these values to the best estimate available for long-term mean chlorophyll-*a* concentrations. Using time-averaged chlorophyll-*a* values for each study lake also allowed us to capture seasonal and inter-annual variation in phytoplankton biomass, as would be reflected in the accumulated sediments.

To quantify spatial heterogeneity in loosely-bound and total P both within and among lakes, we used measures from the nine spatially-distributed shallow sediment cores and the deep site core slices averaged over depth interval slices. To make comparisons of the variability among lakes we calculated the coefficient of variation for both total P and loosely-bound P in each lake. To test if water depth at the sampling site correlated with the concentration of total P and loosely-bound P, we used linear mixed effects regression with lake as a random effect on the intercept. We used likelihood ratio tests to evaluate the importance of random effects of the lake on model intercepts. We also tested the influence of lake basin volume development ( $D_v$ ) on spatial variation in loosely-bound P. The  $D_v$  score is a ratio of the volume of a lake basin to the volume of a perfect cone with a base area equal to the surface area of the lake and a height equal to the maximum water depth. The  $D_v$  ratio is used to characterize lake basin shape. Lakes with low  $D_v$  values have cone-shaped basins with localized deep



**Figure 1.** (a) Principal components analysis (PCA) biplot based on a compositional data analysis of profundal sediment P pools. The compositional analysis was defined by the concentrations of loosely-bound (porewater and surface sorbed), redox-sensitive (Fe- and Mn-bound), aluminum-bound, calcium-bound, and organic P (including labile and refractory components). Arrows represent center log-ratio transformed concentrations of the P fractions. (b) Interpretation of PCA biplot with key environmental variables. Watershed land cover classes are shown in orange while lake and sediment characteristics are plotted in blue.

holes while higher  $D_v$  ratios correspond to shallow, bowl-shaped bathymetries (Hutchinson, 1957).

We used a rarefaction analysis to determine the spatial sampling resolutions needed for accurate inventories of sediment P pools (Ortiz & Wilkinson, 2021). Specifically, we tested how the number of sampling sites affected the whole-lake estimate of mean total and loosely-bound P concentrations. For each study lake and P form, the data were randomly subset to between 2 and 9 sites. The mean P concentration for this sampling subset was then calculated and compared to the “true” mean of all 10 sites based on the root mean square error (RMSE). This analysis was repeated for 1,000 iterations and RMSE values were averaged for each sampling subset and normalized to the mean for all 10 sites to express the estimated error a proportion of the “true” mean concentration.

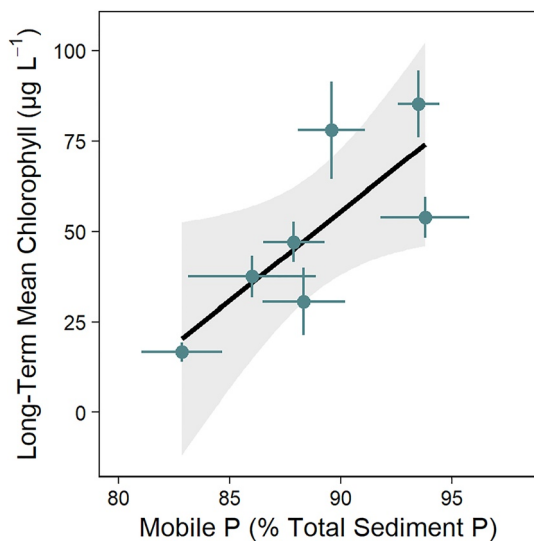
All data are available in Albright et al. (2020), and the analysis code is available from Albright (2022). All statistical analyses were completed in R version 3.6.0 (R Core Team, 2019) using the tidyverse (Wickham et al., 2019), robCompositions (Filzmoser et al., 2018), vegan (Oksanen et al., 2019), lmerTest (Kuznetsova et al., 2017), and infer packages (Bray et al., 2021).

### 3. Results

#### 3.1. Inter-Lake Variation in Profundal Sediment P

The size and composition of the profundal sediment P pool varied considerably among the study lakes. Total sediment P concentrations, averaged across the depth intervals of profundal cores, ranged from 738.2 to 1,164.7  $\mu\text{g P g}^{-1}$  dry sediment. The chemical speciation of the profundal sediment P pool also differed among the study lakes (Table 2). Redox-sensitive and organic P fractions were consistently the most abundant components of the total sediment P pool while aluminum and calcium-bound P were usually present in the lowest concentrations. We used PCA as part of a compositional analysis to explore patterns in profundal sediment P chemistry among our study lakes and to identify lakes with similar sediment P composition (Figure 1a). The first principal component (PC1) explained 45.27% of the variation in the data set and was most closely associated with the prevalence of redox-sensitive and aluminum-bound P. The second principal component (PC2) explained 36.42% of the variation and was highly correlated with organic P content. Together, the first two principal components explained 81.69% of the variance in the data set. Sediment P speciation defined groups of similar lakes (Table 2, Figure 1a). Center, Five Island, Storm, and Silver Lake formed the largest group, based on lower organic P concentrations. Silver Lake was slightly separated from this group due to higher concentrations of loosely-bound P. Abundant organic and loosely-bound P placed North and South Twin Lake in a group together. Swan Lake was distinguished from the other study lakes due to high redox-sensitive and aluminum-bound P concentrations.

The grouping of study lakes based on sediment P composition followed patterns in dominant watershed soil series (Table S2 in Supporting Information S1). North and South Twin Lake had very similar watershed soil composition, primarily characterized by Webster, Nicollet, Clarion, and Canisteo soil series. Additionally, Swan Lake, which was unique in sediment P speciation, had a different watershed soil composition, the majority of which were Marshall, Colo-Judson, and Exira series formed in loess, rather than glacial till. There was variation in dominant watershed soils within the Center, Five Island, Silver and Storm Lake group. Soils in the Storm Lake



**Figure 2.** The relationship between the fraction of the total sediment P pool that is comprised of mobile species (averaged over 0–6 cm at the profundal sampling site) and the long-term (2000–2018 for most study lakes or 2006–2018 for South Twin Lake) mean chlorophyll-*a* concentrations in each study lake ( $F_{1,5} = 7.6$ ;  $p = 0.04$ ; adjusted  $R^2 = 0.52$ ;  $\beta_1 = 4.9$ ,  $CI_{95\%} = [0.33, 9.5]$ ). The gray shaded area indicates the 95% confidence interval.

catchment were predominantly Sac, Primghar, Marcus, and Galva series formed in loess while the other watershed soils were composed of series formed in glacial till.

In addition to watershed soils, some landcover classes corresponded to the observed groups of study lakes based on profundal sediment P chemistry (Table S3 in Supporting Information S1, Figure 1b). Specifically, the proportions of grassland and forest cover in the catchment were strong predictors of sediment P composition, separating Swan Lake from the other waterbodies. Lake basin morphology and sediment characteristics were also strong predictors of lake groupings. The Center, Five Island, Storm, and Silver Lake group was associated with greater maximum lake depth and higher sediment bulk density. The North and South Twin Lake group was associated with higher sediment organic matter content and greater volume development, indicating bowl-shaped basins. The spread of lakes along PC1 seems to be driven by watershed characteristics while variation along PC2 was more closely associated with lake basin and sediment features.

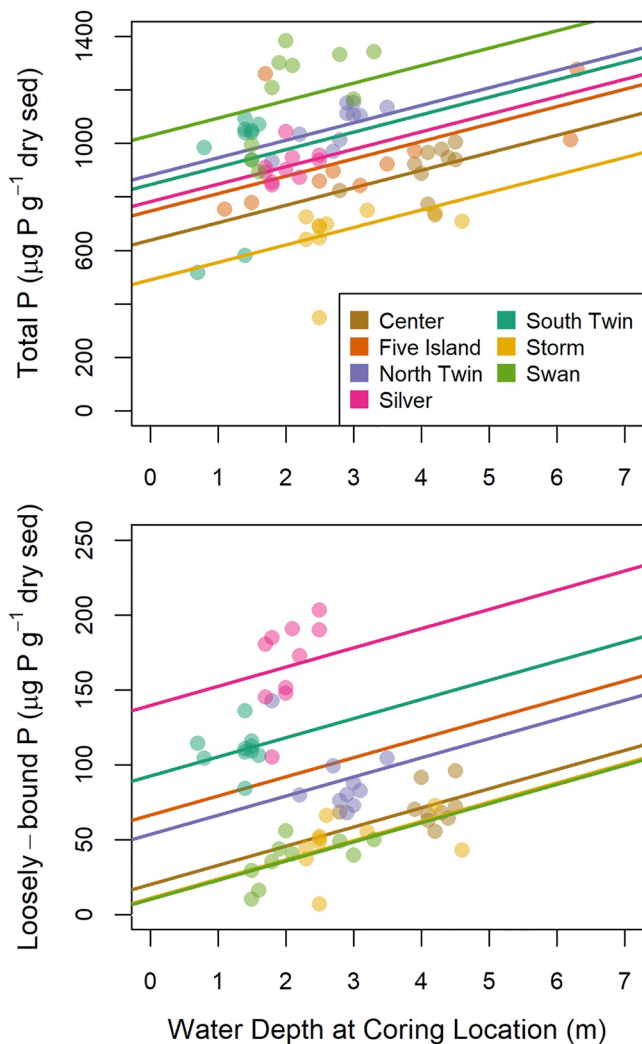
In order to evaluate the ecosystem-level implications of the observed variation in profundal sediment P speciation among our study lakes, we tested the relationship between the relative availability of mobile P fractions in the sediment and phytoplankton biomass in each lake. We performed a linear regression of the percent of total sediment P that is mobile (loosely-bound, total organic, and redox-sensitive) versus long-term mean chlorophyll-*a* concentrations. There was a significant positive relationship between the percentage of total P that is mobile and chlorophyll-*a* concentrations among the seven study lakes ( $F_{1,5} = 7.6$ ;  $p = 0.04$ ; adjusted  $R^2 = 0.52$ ;  $\beta_1 = 4.9$ ,  $CI_{95\%} = [0.33, 9.5]$ ; Figure 2).

### 3.2. Intra-Lake Variation in Sediment P

There was substantial spatial variation in total and loosely-bound P within individual study lakes. Loosely-bound P had greater spatial heterogeneity than total P within most lakes. There was a 1.2–2.2-fold within-lake difference in sediment total P and a 1.7–11.3-fold difference in loosely-bound P. Values for the coefficient of variation for loosely-bound P (range = 11.4–39.7%, mean = 25.7%) were also greater than the values for total P (range = 6.4–22.4%, mean = 14.0%; Table 2). South Twin was the only lake for which the coefficient of variation for loosely-bound P was less than the coefficient of variation for total P. The depth of the water column at the coring location explained 63.1% of the variation in sediment total P and 84.6% of the variation in loosely-bound P when lake was included as a random effect on the intercept (Figure 3). Including random effects on the model intercepts substantially improved the model fits ( $p < 0.0001$  for both models). For both the total sediment P and loosely-bound fractions, concentrations increased with depth. The increase in P with water depth was greater for total P ( $\beta_1 = 65.3$ ,  $CI_{95\%} = [27.6, 102.5]$ ) than loosely-bound P ( $\beta_1 = 12.8$ ,  $CI_{95\%} = [7.2, 18.3]$ ).

We further explored the influence of lake basin morphology on spatial variation in loosely-bound P through an analysis of volume development ( $D_v$ ). We found an inverse relationship between  $D_v$  and the variability in loosely-bound P, measured as the coefficient of variation (Figure 4). Five Island, Storm, and Swan Lakes had the greatest within-lake variation in loosely-bound P (CV range = 32.0–39.7%), and these waterbodies also had low  $D_v$  values (range = 0.65–1.36). Conversely, we found much less variability in loosely-bound P (CV range = 11.4–24.4%) in Center, Silver, North and South Twin Lakes, which all had higher  $D_v$  scores near 2 (range = 1.98–2.12). To evaluate additional explanations for within-lake variation in sediment P, we surveyed spatial relationships between macrophytes and sediment P in Swan Lake (Figure S2 in Supporting Information S1). Both total and loosely-bound sediment P concentrations were lowest in the shallow, northern portion of the lake, and concentrations increased in the deeper, southern portion of the lake. There was no clear pattern between sediment P concentration and macrophyte bed density.





**Figure 3.** Mixed model regression effects of water depth at the coring location on total sediment P ( $\beta_1 = 65.3$ ,  $CI_{95\%} = [27.6, 102.5]$ ; top panel) and loosely-bound sediment P ( $\beta_1 = 12.8$ ,  $CI_{95\%} = [7.2, 18.3]$ ; bottom panel) by lake.

A better understanding of intra-lake variation in sediment P concentrations will inform appropriate spatial sampling resolutions to accurately quantify sediment P pools. We used a rarefaction analysis to test how the number of sampling sites affected the estimate of mean total and loosely-bound P in each study lake. For sediment total P, normalized RMSE values began to plateau when six or more sampling sites were included (Figure 5a). In subsets of six or more sampling sites, the normalized RMSE was less than 5% for all study lakes (range = 1.37–4.71%). Some study lakes had relatively low normalized RMSE values regardless of how many sites were included while others demonstrated sharp declines in normalized RMSE as the number of sites increased. These differences among lakes did not follow patterns with basin  $D_v$  or maximum water depth. Compared to total P, the number of sampling sites had a greater impact on the estimate of mean loosely-bound P within each study lake (Figure 5b). Normalized RMSE values did not reach obvious plateaus for any study lakes. Lakes with low  $D_v$  values (i.e., Five Island, Storm, and Swan Lakes) had higher normalized RMSE values and more drastic improvements in RMSE with increasing number of sample sites. Conversely, lakes with higher  $D_v$  values (i.e., Center, Silver, North and South Twin Lakes) had lower normalized RMSE and more gradual improvements in RMSE with more sampling sites.

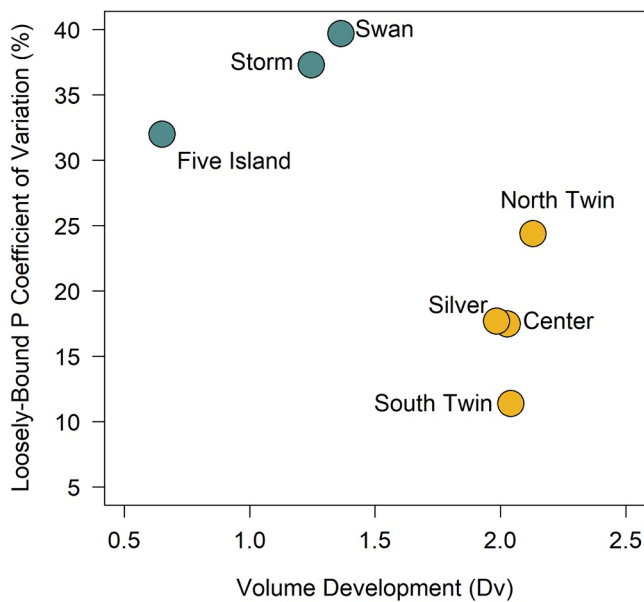
In addition to quantifying the effects of spatial sampling resolution on P pool estimates, we also tested the influence of sample site location, specifically whether P concentrations at the deep site were representative of mean P concentrations across the lakebed. We compared total and loosely-bound P concentrations from the deep site of each lake to the whole-lake mean (Table S4 in Supporting Information S1). For sediment total P, concentrations at the deep site exceeded the whole-lake average for all lakes except Swan Lake. Normalized RMSE values ranged from 0.3 to 11.3% (mean = 4.6%). Loosely-bound P concentrations at the deep site were consistently greater than whole-lake means. Normalized RMSE values were much greater than for total P (range = 2.2–52.5%, mean = 26.2%).

## 4. Discussion

### 4.1. Patterns and Mechanisms of Inter-Lake Variation in Sediment P Pools

We quantified spatial heterogeneity in sediment P content and composition in shallow lakes and found high variation both within and among different waterbodies. Across the study lakes, whole-lake means of sediment total P content ranged from 897.0 to 1,184.9  $\mu\text{g P g}^{-1}$  dry sediment, with a grand mean of 946.2  $\mu\text{g P g}^{-1}$  dry sediment. These concentrations align with ranges from other shallow, eutrophic lakes (Søndergaard et al., 2013) and other productive waterbodies more generally (Doig et al., 2017; Kowalczywska-Madura, Kozak, et al., 2019; Tao & Lu, 2020). Overall, sediment total P concentrations in our study lakes were either similar to or lower than average values reported for other productive waterbodies (Table S5 in Supporting Information S1). Sediment P composition also varied among the study lakes; however, redox-sensitive and organic P were consistently the most abundant fractions. Other eutrophic waterbodies also have high levels of redox-sensitive P (Papera et al., 2021; Randall et al., 2019; Song & Burgin, 2017) and organic P forms (Frost et al., 2019; Nowlin et al., 2005). More generally, aquatic sediments tend to be enriched in redox-sensitive, organic, loosely-bound, and aluminum-bound P because these forms are commonly associated with fine sediments, which are more easily eroded from the source material (i.e., terrestrial soils; Stone & English, 1993; Kerr et al., 2011).

Variation in sediment P composition among the study lakes followed differences in watershed and lake basin characteristics. The North and South Twin Lake and Swan Lake groupings reflect patterns in dominant watershed soil series. However, there was variation in watershed soil characteristics within the Center, Five Island, Silver



**Figure 4.** Variation in sediment loosely-bound P across lake basin volume development. The coefficient of variation for loosely-bound P was highest in lakes with low volume development scores (blue points), indicating more variable basin shape. Lakes with higher volume development ratios (yellow points) had less intra-lake variation in loosely-bound P.

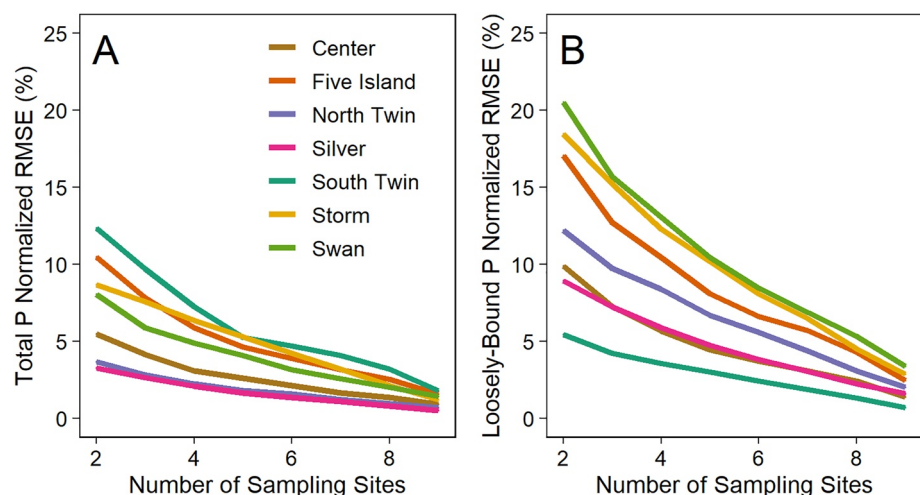
and Storm Lake group as soils in the Storm Lake catchment were formed partially in loess while the other watershed soils were formed in glacial till. Variation in watershed soils within this group reinforces that aquatic sediment P composition is not a direct reflection of the bulk soil matrix due to selective erosional and sediment transport processes as well as in situ processing (Kerr et al., 2011). For example, similarities in P composition within this group were related to maximum depth and sediment bulk density, suggesting that these waterbodies may experience more similar sediment transport, deposition, and resuspension processes compared to other study lakes (Mackay et al., 2012).

In addition to the role of watershed and lake basin features in driving differences in sediment P composition across the study lakes, we also found a direct relationship between long-term mean chlorophyll-*a* concentrations, as an index of phytoplankton biomass, and the average contribution of mobile P species to the total sediment P pool in surface sediments. This relationship suggests a positive feedback loop between mobile sediment P forms, heightened internal P loading rates, and phytoplankton biomass (Katsev et al., 2006; Song & Burgin, 2017). Specifically, internally-loaded P from mobile forms in the sediments supports phytoplankton production, while sedimentation of phytoplankton detritus supplies more mobile P to the sediments. Organic P was the largest fraction of total sediment P in all of the study lakes, driving the among-lake variability in mobile P contributions. Given the prevalence of organic P in the sediments, it is likely that decomposition of sediment organic matter and subsequent P mineralization are key processes for internal P loading in the study lakes (Frost et al., 2019; Joshi et al., 2015). In hypereutrophic

waterbodies rampant phytoplankton production and detritus enhance organic matter sedimentation, increasing organic P in lakebed sediments. Large pools of organic P are associated with high extracellular enzyme activities, which mobilize and release sediment P (Song & Burgin, 2017). Our study lakes are likely examples of systems in which biologically-mediated cycling of organic P pools drives internal P loading and high phytoplankton production in turn increases mobile P forms in the sediments.

#### 4.1.1. Implications of Inter-Lake Variation in Sediment P Pools

For a given waterbody, the dominant mechanisms of internal P loading depend on the chemical composition of the sediment P pool (Orihel et al., 2017). The variation that we measured in sediment P composition among



**Figure 5.** Rarefaction analysis of mean total (a) and loosely-bound (b) P concentrations based on the number of sampling sites. Root mean square error (RMSE) values are normalized as a percent of the mean P concentration when all 10 sampling sites are included.

different lakes implies that the processes driving sediment P release also vary across these ecosystems. For example, redox-sensitive P was the dominant fraction in Swan Lake while North and South Twin Lake a higher prevalence of organic P. Based on these differences in sediment P composition, we would expect sediment P release in these lakes to respond differently to dissolved oxygen levels at the sediment-water interface. Although these lakes are polymictic, they are also very productive such that periods of thermal stratification can cause anoxia in bottom waters. Anoxia would likely prompt sediment P release in Swan Lake due to the dissolution of redox-sensitive minerals under reducing conditions (Mortimer, 1941; Orihel et al., 2015). Anaerobic sediment P release from redox-sensitive P minerals could also occur in North and South Twin Lake; however, due to high organic P levels, we would also expect to see sediment P release under oxic conditions due to decomposition of sediment organic matter and subsequent P mineralization (Frost et al., 2019; Joshi et al., 2015; Song & Burgin, 2017). Bottom water aeration, a management approach to limit anaerobic internal P loading, might protect redox-sensitive minerals and reduce sediment P release in Swan Lake, but the same approach in North and South Twin Lakes could stimulate decomposition and enhance aerobic P release (Horppila et al., 2017; Tammeorg et al., 2017). Inter-lake variation in sediment P composition means that management strategies to control internal P loading are unlikely to translate well across lakes with different sediment P chemistry.

#### 4.2. Mechanisms of Intra-Lake Variation in Sediment P Pools

In addition to variation in sediment P content and composition across different lakes, we also quantified spatial heterogeneity in total and loosely-bound P pools within individual lakes. Consistent with our expectations, loosely-bound P concentrations were most variable in lakes with low volume development indices, indicative of conical basins with localized deep holes. This bathymetric variability produces both shallow regions where frequent sediment disturbance releases loosely-bound P and deeper areas where loosely-bound P is protected (James, 2017a). As a result, loosely-bound P concentrations are more variable in lake basins with more complex bathymetry. In contrast, lakes with high volume development scores, associated with shallow, bowl-shaped basins, had more consistent loosely-bound P concentrations, as sediment disturbance was likely more uniform across the lakebed.

We also hypothesized that greater water depths would correlate with higher concentrations of total and loosely-bound sediment P across the lakebed, which was supported by the mixed model analysis. In fact, the depth of the water at the sediment sampling location described the vast majority (84.1%) of the variation in loosely-bound P and over half of the variation (63.1%) in total P concentrations. The pattern of higher concentrations at greater depths is likely driven by sediment focusing and greater net sediment deposition in deeper portions of the lake (Cardoso-Silva et al., 2018; Hou et al., 2014; White & Stone, 1996). The direct relationship that we observed between water depth and sediment P concentrations is consistent with other studies of spatial variation in sediment P pools (Kowalczevska-Madura, Kozak, et al., 2019; Nowlin et al., 2005). However, water depth did not fully explain the observed variation in sediment total and loosely-bound P, indicating that factors beyond basin morphology contribute to spatial variation in sediment P pools.

A factor that may influence the spatial distribution of the sediment P pool is the location and density of macrophyte beds. However, contrary to our expectations, we found no clear spatial pattern between macrophyte bed density and sediment P pools. High turbidity limited the depth of macrophyte colonization in most of our study lakes such that we were only able to test these spatial relationships in one lake. Another complicating factor is that macrophytes could be expected to either increase sediment P stocks by stabilizing sediments and reducing resuspension (Carpenter et al., 1983; Madsen et al., 2001) or decrease sediment P pools via biological uptake (Xing et al., 2018). Exploring the balance of this complex relationship in more waterbodies is an avenue for future research.

Our study provides a valuable characterization of spatial heterogeneity in sediment P pools. Although sediment P content and chemical composition are expected to vary over time as a balance of sedimentation, mobilization and release into the water column, and post depositional transformations (Heathcote et al., 2013; Ostrofsky, 2012), other studies of natural, productive lakes have found limited temporal variation in sediment P concentrations on intra-annual scales (Kowalczevska-Madura, Gołdyn, et al., 2019; Kowalczevska-Madura, Kozak, et al., 2019). As such, our results provide a fair snapshot of expected spatial variation in sediment P pools within shallow lakes. A natural progression of this research is to explore temporal variation in sediment P content and composition.

### 4.3. Applications and Significance

A quantitative understanding of intra-lake heterogeneity in sediment P concentrations reveals the spatial sampling resolutions necessary for accurate inventories of sediment P stocks. Our rarefaction analysis suggests that sampling six or more locations across the lakebed may be sufficient to estimate the mean, whole-lake concentration of sediment total P. When six or more sites were included, estimate error (normalized RMSE) dropped below five percent for all study lakes and remained stable even as more sampling sites were included. This result aligns with research on lacustrine burial rates that proposes as few as five sediment cores can be used to accurately assess sediment P accumulation rates (Engstrom & Rose, 2013; Rippey et al., 2008). Compared to the rarefaction analysis for total P, estimate errors for mean loosely-bound P concentrations were greater for most study lakes, and there were no clear plateaus in error values as more sampling sites were considered. However, the relationship between sampling sites and estimate error did follow a pattern with basin morphology. Lakes with more complex bathymetry (low  $D_v$ ; Five Island, Storm, Swan Lake) had more drastic improvements in RMSE values as more sampling sites were considered. Lakes with simple, bowl-shaped basins (high  $D_v$ ; Silver, Center, South Twin, North Twin Lake) had lower RMSE values overall and more gradual improvements with increased sampling resolution. This pattern makes sense in light of our finding that lakes with more complex basin morphology had greater spatial variation in loosely-bound P concentrations and suggests that more sampling sites are needed to inventory loosely-bound P stocks compared to total P, especially in lakes with complex bathymetry.

Comparing P concentrations at the deep site of each study lake to whole-lake means demonstrates that scaling values from the deep site to the entire lakebed will tend to overestimate sediment P stocks. We found that total P concentrations at the deep site were greater than the whole-lake average for all lakes except for Swan Lake, where the values were very similar, and that extrapolating values from the deep site could overestimate the whole-lake mean by as much as 11.3%. Loosely-bound P concentrations at the deep site were consistently greater than the whole-lake mean and extrapolating from the deep site overestimated loosely-bound P stocks by 2.2–52.5% (mean 26.2%). Our findings support other studies suggesting that single-core analyses produce unreliable estimates of whole lake carbon and nutrient stocks (Lin et al., 2022; Mackay et al., 2012). Our analysis further reinforces that a good approach for addressing this bias and obtaining an accurate estimate of whole-lake sediment P stocks is to collect multiple sediment cores across a range of water depths (Engstrom & Rose, 2013). Accurate inventories of sediment P stocks are necessary to parameterize models of lentic P cycling (Hanson et al., 2020), including those used within regulatory frameworks (e.g., total maximum daily load calculations for P-impaired waterbodies). Lake response to simulated changes in external P loading will be sensitive to the mass of P held in the sediments that is available for recycling. As such, accurate estimates of sediment P stocks, accounting for spatial variation, are critical for modeling lentic P cycles and forecasting lake response to changes in watershed nutrient loading.

A quantitative understanding of inter- and intra-lake variation in sediment P content and composition is essential for accurately sampling, scaling, and modeling sediment P pools, yet this variability has been largely undescribed for shallow lakes. Our study builds on our understanding of regional patterns in lacustrine sediment P speciation and contributes novel perspectives on the causes and consequences of spatial heterogeneity in sediment P pools within shallow lakes. Our finding of inter-lake variation in sediment P composition reinforces that management strategies to control internal P loading will also differ among lakes and that effective solutions will consider site-specific features, including sediment P chemistry. Our analysis further supports that shallow lakes are spatially heterogeneous ecosystems, and accounting for this variation is necessary to accurately characterize sediment P pools. The large within-lake variability in loosely-bound and total P documented in this study reinforces the importance of sampling multiple sites across the lakebed when possible and using caution when extrapolating measures from the deep site to the whole system. Accurate sediment P inventories will allow for more empirical parameterization of sediment-water interactions in models of lake P cycling. Our quantification of spatial heterogeneity in sediment P pools within and among lakes is a critical step to being able to predict internal P loading potential based on lake and watershed characteristics.

### Conflict of Interest

The authors declare no conflicts of interest relevant to this study.

## Data Availability Statement

The data supporting the conclusions are publicly available in Albright (2022) and Albright et al. (2020), and the analysis code is available from Zenodo: <https://doi.org/10.5281/zenodo.6632574>.

## Acknowledgments

We thank David Ortiz and Elena Sandry for their assistance with sample collection and analysis, and Dr. Jonathan Walter, Dr. Philip Dixon and Audrey McCombs for helpful discussions regarding analyses. All authors and the research were supported with funds from Iowa Department of Natural Resources (Contract No. 18CRDLWBMBALM-0013). Albright was additionally supported by the National Science Foundation Graduate Research Fellowship under Grant No. (1744592). Open access funding provided by the Iowa State University Library.

## References

- Albright, E. A. (2022). AlbrightE/Sediment\_P\_2018-Release-2022 ver. 1. Zenodo. <https://doi.org/10.5281/zenodo.6632574>
- Albright, E. A., Wilkinson, G. M., Fleck, R. A., & Shingai, Q. (2020). Analysis of sediment phosphorus pools in shallow lakes. figshare. [Dataset]. <https://doi.org/10.6084/m9.figshare.13362971.v1>
- Arar, E. J., & Collins, G. B. (1997). *Method 445.0* in vitro determination of chlorophyll a and pheophytin a in marine and freshwater algae by fluorescence. U.S. Environmental Protection Agency.
- Arbuckle, K. E., & Downing, J. A. (2001). The influence of watershed land use on lake N:P in a predominantly agricultural landscape. *Limnology & Oceanography*, 46(4), 970–975. <https://doi.org/10.4319/lo.2001.46.4.0970>
- Bengtsson, L., & Hellström, T. (1992). Wind-induced resuspension in a small shallow lake. *Hydrobiologia*, 241(3), 163–172. <https://doi.org/10.1007/BF00028639>
- Boström, B., Andersen, J. M., Fleischer, S., & Jansson, M. (1988). Exchange of phosphorus across the sediment-water interface. *Hydrobiologia*, 170(1), 229–244. <https://doi.org/10.1007/BF00024907>
- Bray, A., Ismay, C., Chasnovski, E., Baumer, B., & Cetinkaya-Rundel, M. (2021). infer: Tidy Statistical Inference. R package version 0.5.4. Retrieved from <https://CRAN.R-project.org/package=infer>
- Cardoso-Silva, S., Ferreira, P. A., Figueira, R. C. L., Silva, D. C., Moschini-Carlos, V., & Pompêo, M. L. M. (2018). Factors that control the spatial and temporal distributions of phosphorus, nitrogen, and carbon in the sediments of a tropical reservoir. *Environmental Science and Pollution Research*, 25(31), 31776–31789. <https://doi.org/10.1007/s11356-018-2923-0>
- Carlson, R. E. (1977). A trophic state index for lakes. *Limnology & Oceanography*, 22(2), 361–369. <https://doi.org/10.4319/lo.1977.22.2.0361>
- Carpenter, S. R., Caraco, N. F., Correll, D. L., Howarth, R. W., Sharpley, A. N., & Smith, V. H. (1998). Nonpoint pollution of surface waters with phosphorus and nitrogen. *Ecological Applications*, 8(3), 559–568. [https://doi.org/10.1890/1051-0761\(1998\)008\[0559:NPOSWW\]2.0.CO;2](https://doi.org/10.1890/1051-0761(1998)008[0559:NPOSWW]2.0.CO;2)
- Carpenter, S. R., Elser, J. J., & Olson, K. M. (1983). Effects of roots of *Myriophyllum verticillatum* L. on sediment redox conditions. *Aquatic Botany*, 17(3–4), 243–249. [https://doi.org/10.1016/0304-3770\(83\)90060-8](https://doi.org/10.1016/0304-3770(83)90060-8)
- Doig, L. E., North, R. L., Hudson, J. J., Hewlett, C., Lindenschmidt, K.-E., & Liber, K. (2017). Phosphorus release from sediments in a river-valley reservoir in the northern Great Plains of North America. *Hydrobiologia*, 78(1), 323–339. <https://doi.org/10.1007/s10750-016-2977-2>
- Ekholm, P., Malve, O., & Kirkkala, T. (1997). Internal and external loading as regulators of nutrient concentrations in the agriculturally loaded Lake Pyhäjärvi (southwest Finland). *Hydrobiologia*, 345(1), 3–14. <https://doi.org/10.1023/A:1002958727707>
- Elser, J. J., Bracken, M. E. S., Cleland, E. E., Gruner, D. S., Harpole, W. S., Hillebrand, H., et al. (2007). Global analysis of nitrogen and phosphorus limitation of primary producers in freshwater, marine and terrestrial ecosystems. *Ecology Letters*, 10(12), 1135–1142. <https://doi.org/10.1111/j.1461-0248.2007.01113.x>
- Engstrom, D. R., & Rose, N. L. (2013). A whole-basin, mass-balance approach to paleolimnology. *Journal of Paleolimnology*, 49(3), 333–347. <https://doi.org/10.1007/s10933-012-9675-5>
- Filzmoser, P., Hron, K., & Templ, M. (2018). Applied compositional data analysis with worked examples in R. In *Spring series in statistics*. Springer International Publishing.
- Forsberg, C. (1989). Importance of sediments in understanding nutrient cyclings in lakes. *Hydrobiologia*, 176/177(1), 263–277. <https://doi.org/10.1007/BF00026561>
- Frost, P. C., Prater, C., Scott, A. B., Song, K., & Xenopoulos, M. A. (2019). Mobility and bioavailability of sediment phosphorus in urban storm-water ponds. *Water Resources Research*, 55(5), 3680–3688. <https://doi.org/10.1029/2018WR023419>
- Golterman, H. L. (2004). *The chemistry of phosphate and nitrogen compounds in sediments*. Springer Science+Business Media, B.V.
- Håkanson, L., & Jansson, M. (2002). *Principles of lake sedimentology*. The Blackburn Press. <https://doi.org/10.1002/iroh.19850700318>
- Hanson, P. C., Stillman, A. B., Jia, X., Karpatine, A., Dugan, H. A., Carey, C. C., et al. (2020). Predicting lake surface water phosphorus dynamics using process-guided machine learning. *Ecological Modelling*, 430, 109136. <https://doi.org/10.1016/j.ecolmodel.2020.109136>
- Heathcote, A. J., Filstrup, C. T., & Downing, J. A. (2013). Watershed sediment losses to lakes accelerating despite agricultural soil conservation efforts. *PLoS One*, 8(1), e53554. <https://doi.org/10.1371/journal.pone.0053554>
- Horpilla, J., Holmroos, H., Niemistö, J., Massa, I., Nygrén, N., Schönach, P., et al. (2017). Variations of internal phosphorus loading and water quality in a hypertrophic lake during 40 years of different management efforts. *Ecological Engineering*, 103, 264–274. <https://doi.org/10.1016/j.ecoleng.2017.04.018>
- Hou, D., He, J., Lü, C., Dong, S., Wang, J., Xie, Z., & Zhang, F. (2014). Spatial variation and distributions of phosphorus and nitrogen in bottom sediments from a typical north-temperate lake, China. *Environmental Earth Sciences*, 71(7), 3063–3079. <https://doi.org/10.1007/s12665-013-2683-6>
- Hutchinson, G. E. (1957). *A treatise on limnology* (Vol. 1). Wiley.
- James, W. F. (2017b). Diffusive phosphorus fluxes in relation to the sediment phosphorus profile in Big Traverse Bay, Lake of the Woods. *Lake and Reservoir Management*, 33(4), 360–368. <https://doi.org/10.1080/10402381.2017.1346010>
- James, W. F. (2017a). Internal phosphorus loading contributions from deposited and resuspended sediment to the Lake of the Woods. *Lake and Reservoir Management*, 34(4), 347–359. <https://doi.org/10.1080/10402381.2017.1312647>
- Jensen, H. S., & Andersen, F. Ø. (1992). Importance of temperature, nitrate, and pH for phosphate release from aerobic sediments of four shallow, eutrophic lakes. *Limnology & Oceanography*, 37(3), 577–598. <https://doi.org/10.4319/lo.1992.37.3.0577>
- Jeppesen, E., Søndergaard, M., Jensen, J. P., Havens, K. E., Anneville, O., Carvalho, L., et al. (2005). Lake responses to reduced nutrient loading — An analysis of contemporary long-term data from 35 case studies. *Freshwater Biology*, 50(10), 1747–1771. <https://doi.org/10.1111/j.1365-2427.2005.01415.x>
- Jiang, X. Y., Gao, G., Hu, Y., Shao, K. Q., Tang, X. M., Cheng, H., & Li, J. (2022). The shift from macrophytic to algal particulate organic matter favours dissimilatory nitrate reduction to ammonium over denitrification in a eutrophic lake. *Freshwater Biology*, 67(3), 564–576. <https://doi.org/10.1111/fwb.13863>

- Joshi, S. R., Kukkadapu, R. K., Burdige, D. J., Bowden, M. E., Sparks, D. L., & Jaisi, D. P. (2015). Organic matter remineralization predominates phosphorus cycling in the mid-bay sediments in the Chesapeake Bay. *Environmental Science and Technology*, 49(10), 5887–5896. <https://doi.org/10.1021/es5059617>
- Katsev, S., Tsandev, I., L'Heureux, I., & Rancourt, D. G. (2006). Factors controlling long-term phosphorus efflux from lake sediments: Exploratory reactive-transport modeling. *Chemical Geology*, 234(1–2), 127–147. <https://doi.org/10.1016/j.chemgeo.2006.05.001>
- Kelton, N., & Chow-Fraser, P. (2005). A simplified assessment of factors controlling phosphorus loading from oxygenated sediments in a very shallow eutrophic lake. *Lake and Reservoir Management*, 21(3), 223–230. <https://doi.org/10.1080/07438140509354432>
- Kerr, J. G., Burford, M. A., Olley, J. M., Bunn, S. E., & Udy, J. (2011). Examining the link between terrestrial and aquatic phosphorus speciation in a subtropical catchment: The role of selective erosion and transport of fine sediments during storm events. *Water Research*, 45(11), 3331–3340. <https://doi.org/10.1016/j.watres.2011.03.048>
- Kowalczywska-Madura, K., Goldyn, R., Bogucka, J., & Strzelczyk, K. (2019). Impact of environmental variables on spatial and seasonal internal phosphorus loading in a mesoeutrophic lake. *International Journal of Sediment Research*, 34(1), 14–26. <https://doi.org/10.1016/j.ijsrc.2018.08.008>
- Kowalczywska-Madura, K., Kozak, A., Dera, M., & Goldyn, R. (2019). Internal loading of phosphorus from bottom sediments of two meso-eutrophic lakes. *International Journal of Environmental Research*, 13(2), 325–251. <https://doi.org/10.1007/s41742-019-00167-y>
- Kuznetsova, A., Brockhoff, P. B., & Christensen, R. H. B. (2017). lmerTest package: Tests in linear mixed effects models. *Journal of Statistical Software*, 82(13), 1–26. <https://doi.org/10.18637/jss.v082.i13>
- Lewis, W. M. (1983). A revised classification of lakes based on mixing. *Canadian Journal of Fisheries and Aquatic Sciences*, 40(10), 1779–1787. <https://doi.org/10.1139/f83-207>
- Lin, Q., Liu, E., Zhang, E., Bindler, R., Nath, B., Zhang, K., & Shen, J. (2022). Spatial variation of organic carbon sequestration in large lakes and implications for carbon stock quantification. *Catena*, 208, 105768. <https://doi.org/10.1016/j.catena.2021.105768>
- Mackay, E. B., Jones, I. D., Folkard, A. M., & Barker, P. (2012). Contribution of sediment focussing to heterogeneity of organic carbon and phosphorus burial in small lakes. *Freshwater Biology*, 57(2), 290–304. <https://doi.org/10.1111/j.1365-2427.2011.02616.x>
- Madsen, J. D., Chambers, P. A., James, W. F., Koch, E. W., & Westlake, D. F. (2001). The interactions between water movement, sediment dynamics and submersed macrophytes. *Hydrobiologia*, 444(1/3), 71–84. <https://doi.org/10.1023/A:1017520800568>
- Mortimer, C. (1941). The exchange of dissolved substances between mud and water in lakes. *Journal of Ecology*, 29(1), 280–239. <https://doi.org/10.2307/2256691>
- North, R. L., Johansson, J., Vandergucht, D. M., Doig, L. E., Liber, K., Lindenschmidt, K., et al. (2015). Evidence for internal phosphorus loading in a large prairie reservoir (Lake Diefenbaker, Saskatchewan). *Journal of Great Lakes Research*, 41(S2), 91–99. <https://doi.org/10.1016/j.jglr.2015.07.003>
- Nowlin, W. H., Everts, J. L., & Vanni, M. J. (2005). Release rates and potential fates of nitrogen and phosphorus from sediments in a eutrophic reservoir. *Freshwater Biology*, 50(2), 301–322. <https://doi.org/10.1111/j.1365-2427.2004.01316.x>
- Nürnberg, G. K. (1988). Prediction of phosphorus release rates from total and reductant-soluble phosphorus in anoxic lake sediments. *Canadian Journal of Fisheries and Aquatic Sciences*, 45(3), 453–462. <https://doi.org/10.1139/f88-054>
- Oksanen, J., Blanchet, F. G., Friendly, M., Kindt, R., Legendre, P., McGinn, D., et al. (2019). vegan: Community Ecology Package. R package version 2.5-6. Retrieved from <https://CRAN.R-project.org/package=vegan>
- Orihel, D. M., Baulch, H. M., Casson, N. J., North, R. L., Parsons, C. T., Seckar, D. C. M., & Venkiteswaran, J. J. (2017). Internal phosphorus loading in Canadian fresh waters: A critical review and data analysis. *Canadian Journal of Fisheries and Aquatic Sciences*, 74(12), 2005–2029. <https://doi.org/10.1139/cjfas-2016-0500>
- Orihel, D. M., Schindler, D. W., Ballard, N. C., Graham, M. D., O'Connell, D. W., Wilson, L. R., & Vinebrooke, R. D. (2015). The "nutrient pump": Iron-poor sediments fuel low nitrogen-to-phosphorus ratios and cyanobacterial blooms in polymictic lakes. *Limnology & Oceanography*, 60(3), 856–871. <https://doi.org/10.1002/lno.10076>
- Ortiz, D. A., & Wilkinson, G. M. (2021). Capturing the spatial variability of algal bloom development in a shallow temperate lake. *Freshwater Biology*, 66(11), 2064–2075. <https://doi.org/10.1111/fwb.13814>
- Ostrofsky, M. L. (2012). Differential post-depositional mobility of phosphorus species in lake sediments. *Journal of Paleolimnology*, 48(3), 559–569. <https://doi.org/10.1007/s10933-012-9631-4>
- Papera, J., Araújo, F., & Becker, V. (2021). Sediment phosphorus fractionation and flux in a tropical shallow lake. *Acta Limnologica Brasiliensia*, 33, e5. <https://doi.org/10.1590/S2179-975X9020>
- Pease, L. A., King, K. W., Williams, M. R., LaBarge, G. A., Duncan, E. W., & Fausey, N. R. (2018). Phosphorus export from artificially drained fields across the Eastern Corn Belt. *Journal of Great Lakes Research*, 44(1), 43–53. <https://doi.org/10.1016/j.jglr.2017.11.009>
- Psenner, R., & Puckso, R. (1988). Phosphorus fractionation: Advantages and limits of the method for the study of sediment P origins and interactions. *Archiv für Hydrobiologie*, 30, 43–59. ISSN: 0071-1128.
- Randall, M. C., Carling, G. T., Dastrup, D. B., Miller, T., Nelson, S. T., Rey, K. A., et al. (2019). Sediment potentially controls in-lake phosphorus cycling and harmful cyanobacteria in shallow, eutrophic Utah Lake. *PLoS One*, 14(2), e0212238. <https://doi.org/10.1371/journal.pone.0212238>
- R Core Team. (2019). *R: A language and environment for statistical computing*. R Foundation for Statistical Computing. Retrieved from <https://www.R-project.org/>
- Rippey, B., Anderson, N. J., Renberg, I., & Korsman, T. (2008). The accuracy of methods used to estimate the whole-lake accumulation rate of organic carbon, major cations, phosphorus and heavy metals in sediment. *Journal of Paleolimnology*, 39(1), 83–99. <https://doi.org/10.1007/s10933-007-9098-x>
- Schindler, D. W., Carpenter, S. R., Chapra, S. C., Hecky, R. E., & Orihel, D. M. (2016). Reducing phosphorus to curb lake eutrophication is a success. *Environmental Science & Technology*, 50(17), 8923–8929. <https://doi.org/10.1021/acs.est.6b02204>
- Schindler, D. W., & Vallentyne, J. R. (2008). *The algal bowl: Overfertilization of the world's freshwaters and estuaries*. The University of Alberta Press.
- Søndergaard, M., Bjerring, R., & Jensen, J. P. (2013). Persistent internal phosphorus loading during summer in shallow eutrophic systems. *Hydrobiologia*, 710(1), 95–107. <https://doi.org/10.1007/s10750-012-1091-3>
- Søndergaard, M., Jensen, J. P., & Jeppesen, E. (1999). Internal phosphorus loading in shallow Danish lakes. *Hydrobiologia*, 408/409, 145–152. <https://doi.org/10.1023/A:1017063431437>
- Søndergaard, M., Jensen, J. P., & Jeppesen, E. (2003). Role of sediment and internal loading of phosphorus in shallow lakes. *Hydrobiologia*, 506–509(1–3), 135–145. <https://doi.org/10.1023/B:HYDR.0000008611.12704.dd>
- Song, K., & Burgin, A. J. (2017). Perpetual phosphorus cycling: Eutrophication amplifies biological control on internal phosphorus loading in agricultural reservoirs. *Ecosystems*, 20(8), 1483–1493. <https://doi.org/10.1007/s10021-017-0126-z>

- Standard Methods for the Examination of Water and Wastewater (1998a). Standard methods for the examination of water and wastewater (20th ed.). Method 4500-P B.5.
- Standard Methods for the Examination of Water and Wastewater (1998b). Standard methods for the examination of water and wastewater (20th ed.). Method 4500-P E.
- Standard Methods for the Examination of Water and Wastewater (1998c). Standard methods for the examination of water and wastewater (20th ed.). Method 10200-H.
- Stone, M., & English, M. C. (1993). Geochemical composition, phosphorus speciation and mass transport of fine-grained sediment in two Lake Erie tributaries. *Hydrobiologia*, 253(1–3), 17–29. <https://doi.org/10.1007/BF00050719>
- Tammeorg, O., Möls, T., Niemistö, J., Holmroos, H., & Horppila, J. (2017). The actual role of oxygen deficit in the linkage of the water quality and benthic phosphorus release: Potential implications for lake restoration. *Science of the Total Environment*, 599–600, 732–738. <https://doi.org/10.1016/j.scitotenv.2017.04.244>
- Tang, Q., Peng, L., Yang, Y., Lin, Q., Qian, S. S., & Han, B. (2019). Total phosphorus-precipitation and chlorophyll  $\alpha$ -phosphorus relationships of lakes and reservoirs mediated by soil iron at regional scale. *Water Research*, 154, 136–143. <https://doi.org/10.1016/j.watres.2019.01.038>
- Tao, Y. Q., & Lu, J. (2020). Occurrence of total phosphorus in surface sediments of Chinese lakes and its driving factors and implications. *Journal of Hydrology*, 580, 124345. <https://doi.org/10.1016/j.jhydrol.2019.124345>
- Trolle, D., Zhu, G., Hamilton, D., Luo, L., McBride, C., & Zhang, L. (2009). The influence of water quality and sediment geochemistry on the horizontal and vertical distribution of phosphorus and nitrogen in sediments of a large, shallow lake. *Hydrobiologia*, 627(1), 31–44. <https://doi.org/10.1007/s10750-009-9713-0>
- Twilley, R. R., Ejdung, G., Romare, P., & Kemp, W. M. (1986). A comparative study of decomposition, oxygen consumption and nutrient release for selected aquatic plants occurring in an estuarine environment. *Oikos*, 47(2), 190–198. <https://doi.org/10.2307/3566045>
- Welch, E. B., & Cooke, G. D. (1995). Internal phosphorus loading in shallow lakes: Importance and control. *Lake and Reservoir Management*, 11(3), 273–281. <https://doi.org/10.1080/07438149509354208>
- White, A., & Stone, M. (1996). Spatial variation and distribution of phosphorus forms in bottom sediments of two Canadian Shield Lakes. *Canadian Geographer*, 40(3), 258–265. <https://doi.org/10.1111/j.1541-0064.1996.tb00452.x>
- Wickham, H., Averick, M., Bryan, J., Chang, W., D'Agostino McGowan, L., François, R., et al. (2019). Welcome to the tidyverse. *Journal of Open Source Software*, 4(43), 1686. <https://doi.org/10.21105/joss.01686>
- Xing, X. G., Ding, S. M., Lui, L., Chen, M. S., Yan, W. M., Zhao, L. P., & Zhang, C. (2018). Direct evidence for the enhanced acquisition of phosphorus in the rhizosphere of aquatic plants: A case study on *Vallisneria spiralis*. *Science of the Total Environment*, 616, 386–396. <https://doi.org/10.1016/j.scitotenv.2017.10.304>

## References From the Supporting Information

- Allan, R., & Williams, J. D. H. (1978). Trophic status related to sediment chemistry of Canadian prairie lakes. *Journal of Environmental Quality*, 7(1), 99–106. <https://doi.org/10.2134/jeq1978.00472425000700010020x>
- Allan, R. J., Williams, J. D. H., Joshi, S. R., & Warwick, W. F. (1980). Historical changes and relationship to internal loading of sediment phosphorus forms in hypertrophic prairie lakes. *Journal of Environmental Quality*, 9(2), 199–206. <https://doi.org/10.2134/jeq1980.00472425000900020007x>
- Lucas, B. T., Karsten, L., & Doig, L. E. (2015). Spatial and temporal trends in reservoir physicochemistry and phosphorus speciation within Lake Diefenbaker, a Great Plains reservoir, as inferred from depositional sediments. *Journal of Great Lakes Research*, 41(2), 67–80. <https://doi.org/10.1016/j.jglr.2015.07.009>
- Lucas, B. T., Liber, K., & Doig, L. E. (2015). Reconstructing diatom and chironomid assemblages to infer environmental spatiotemporal trends within Lake Diefenbaker, a narrow river valley reservoir on the Canadian Prairies. *Journal of Great Lakes Research*, 41(2), 45–55. <https://doi.org/10.1016/j.jglr.2015.09.003>
- Mayer, T., Simpson, S. L., Thorleifson, L. H., Lockhart, W. L., & Wilkinson, P. (2006). Phosphorus geochemistry of recent sediments in the south basin of Lake Winnipeg. *Aquatic Ecosystem Health and Management*, 9(3), 307–318. <https://doi.org/10.1080/14634980600876039>
- Mikulyuk, A., Sharma, S., Van Egeren, S., Erdmann, E., Nault, M. E., & Hauxwell, J. (2011). The relative role of environmental, spatial, and land-use patterns in explaining aquatic macrophyte community composition. *Canadian Journal of Fisheries and Aquatic Sciences*, 68(10), 1778–1789. <https://doi.org/10.1139/f2011-095>